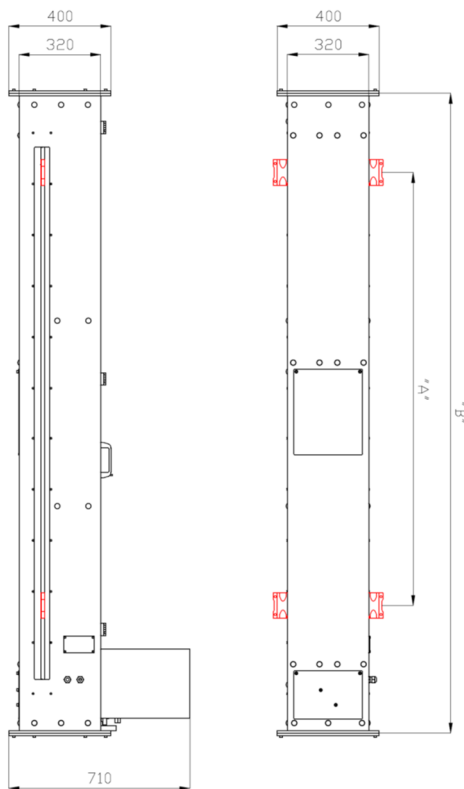
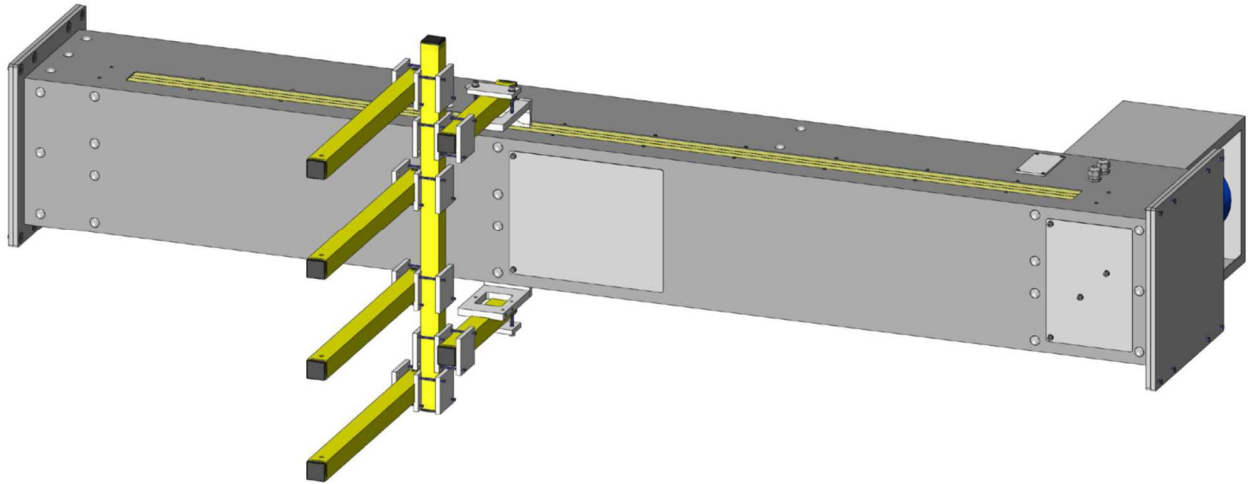


Reciprocator for the horizontal painting, with double outlet for the attack of most painting guns, with the possibility to mount them both horizontally and vertically. Is also designed in anticipation of a detection system dimensional workpiece.



TECHNICAL FEATURES

- Self-carrying steel framework covered with dust paints.
- Coaxial gear motor 0.55 [KW].
- Handling of the guide carriage through belt toothed.
- Dustproof system.
- Light alloy sliding guide with self-cleaning profile.
- Running wheels made of anti-friction materials.
- Double outlet for attack poles of support for guns provided with plates.
- Reading of position through Encoder.
- Motor control through Digital Inverter.
- Adjustable safety limit switches.
- Constant stroke while speed changing.
- Digital control of all functions.
- Machine stop control by conveyor provided with programmable positioning and adjustable timing restart.
- Stroke control with 1 [cm] resolution.
- All function and controls can be performed at the control board.

MODEL	SLO 170	SLO 220	SLO 270	SLO 320
TOTAL HEIGHT [mm] "B"	2510	3010	3510	4010
STROKE [mm] "A"	1700	2200	2700	3200
SPEED MIN [m/min]	5	5	5	5
SPEED MAX [m/min]	50	50	50	50
MOTOR CONTROL	Inverter	Inverter	Inverter	Inverter
MAX NUMBER OF GUNS	4	4	4	4
MAXIMUM CAPACITY [Kg]	20	20	20	20
MOTOR [kw]	0,55	0,55	0,55	0,55
BELT	Toothed	Toothed	Toothed	Toothed
HANDLING GUIDE CARRIAGE	Wheels	Wheels	Wheels	Wheels