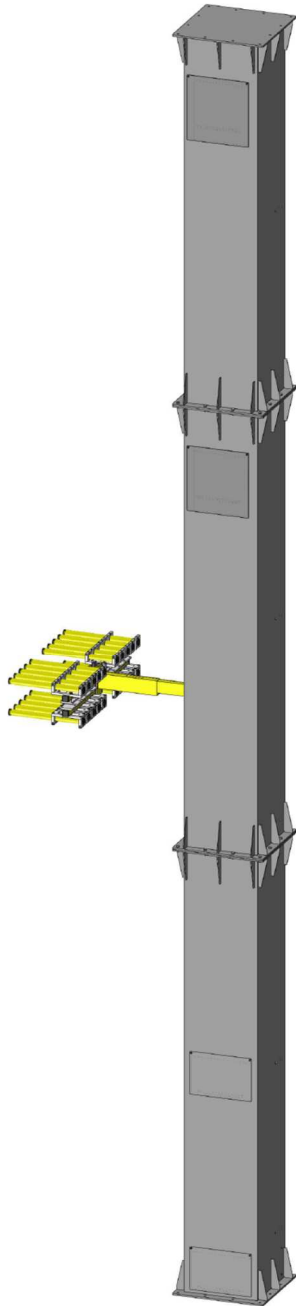


Reciprocator designed for installations that require wide strokes and handling heavy loads.
With single outlet for the attack of most painting guns arranged horizontally.



TECHNICAL FEATURES

- Self-carrying steel framework covered with dust paints.
- Worm gear motor 1.5 [KW].
- Handling of guide carriage through belt toothed.
- Dustproof system.
- Light alloy sliding guide with self-cleaning profile.
- Running wheels made of anti-friction materials.
- Single outlet for attack of guns-holder poles provided with plates.
- Reading of position through Encoder.
- Motor control through Digital Inverter.
- Adjustable safety limit switches.
- Constant stroke while speed changing.
- Digital control of all functions.
- Machine stop control by conveyor provided with programmable positioning and adjustable timing restart.
- Stroke control with 1 [cm] resolution.
- All function and controls can be performed at the control board.

MODEL	SVM 700	SVM 800	SVM 900
TOTAL HEIGHT [mm] "A"	8000	9000	10000
STROKE [mm] "B"	7000	8000	9000
SPEED MIN [m/min]	5	5	5
SPEED MAX [m/min]	55	55	55
MOTOR CONTROL	Inverter	Inverter	Inverter
MAX NUMBER OF GUNS	20	20	20
MAXIMUM CAPACITY [Kg]	80	80	80
MOTOR [kW]	1,5	1,5	1,5
BELT	Toothed	Toothed	Toothed
HANDLING GUIDE CARRIAGE	Wheels	Wheels	Wheels

